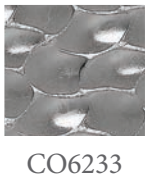


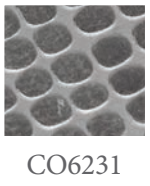
EDELWEISS

Crystals & metals Collection

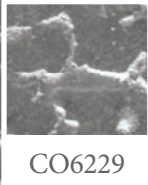
by **destiny**



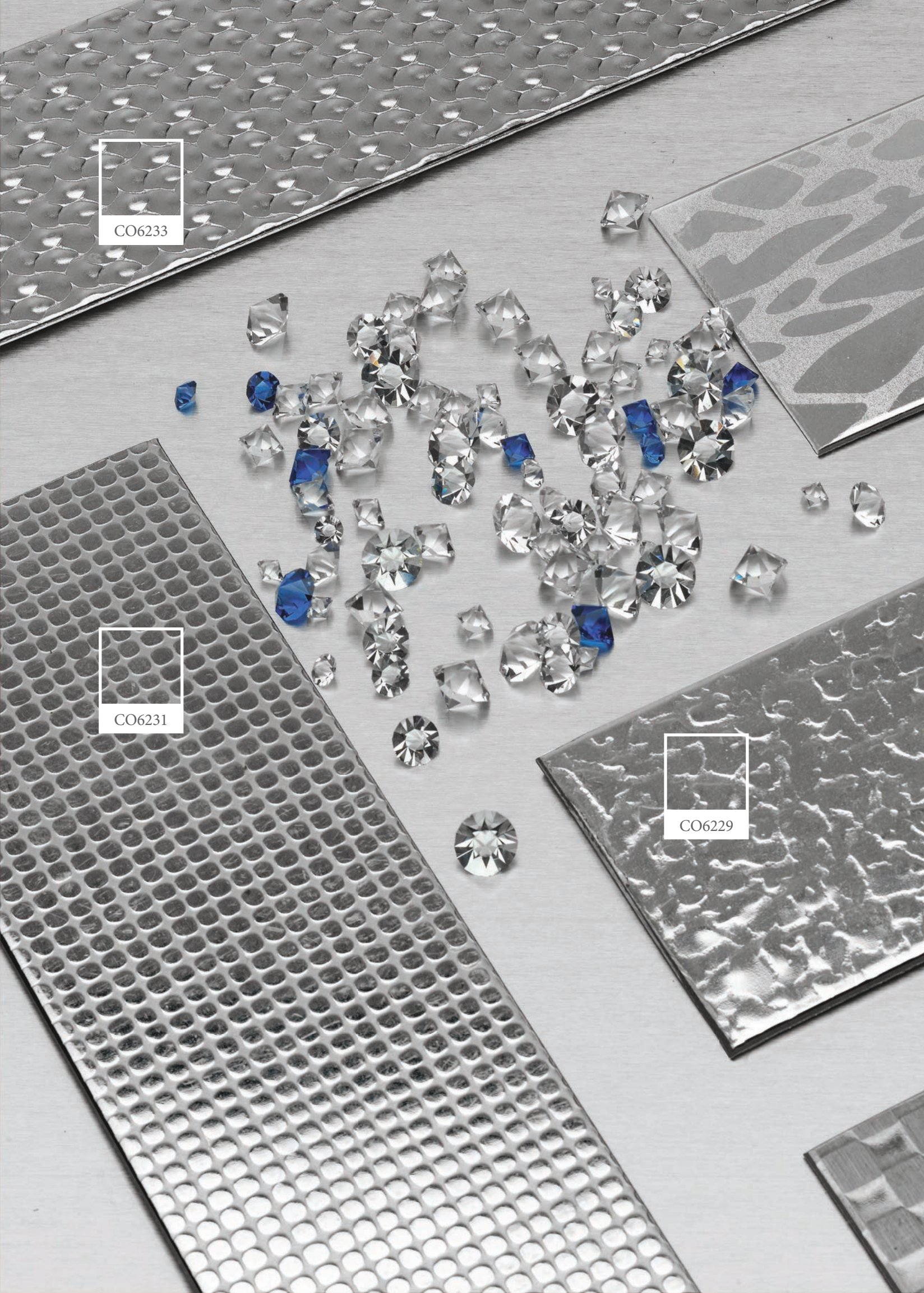
CO6233



CO6231



CO6229



EDELWEISS

Crystals & metals Collection



by **destiny**

Edelweiss: los detalles de calidad, marcan la diferencia.

Creaciones que fusionan los más selectos materiales con el savoir-faire de Destiny. Todo un tributo a nuestra pasión por el textil, donde se combina historia e innovación.

Un universo lleno de encanto y detalles singulares, capaz de crear una atmósfera de brillos sutiles y estilo atemporal.

AquaClean Technology y Trevira, son los avances técnicos de la colección. Esta excepcional combinación es perfecta para sofisticados proyectos de contract y altamente recomendable para uso residencial.

En definitiva, Edelweiss es el nuevo capítulo de nuestra historia de creación.

Edelweiss: the quality details
make the difference.

Creations that blend the most select materials with Destiny's know-how. A comprehensive tribute to our passion for textiles, combining history and innovation.

A universe full of charm and unique details that inspires an atmosphere of subtle shines and timeless style.

AquaClean Technology and Trevira are the collection's technical developments. This exceptional combination is perfect for sophisticated contract projects and highly recommendable for residential use.

In short, Edelweiss is the new chapter in our history of creation.

Edelweiss: les détails de qualité
font la différence.

Des créations fusionnant les matériaux les plus sélects avec le savoir-faire de Destiny. Un véritable témoignage de notre passion pour le textile, où l'histoire et l'innovation se combinent.

Un univers rempli d'enchantement et de détails singuliers, capable de créer une atmosphère de brillants subtils et un style atemporel.

AquaClean Technology et Trevira sont les avancées techniques de la collection. Cette combinaison exceptionnelle est parfaite pour des projets de contract sophistiqués et très recommandable pour une utilisation résidentielle.

En définitive, Edelweiss est le nouveau chapitre de notre histoire de création.

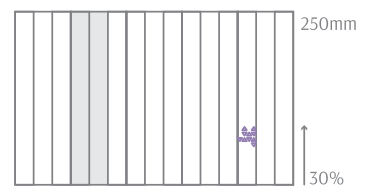
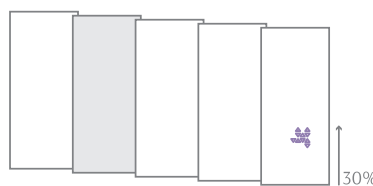
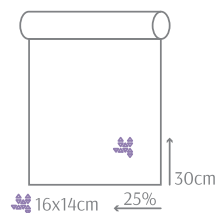
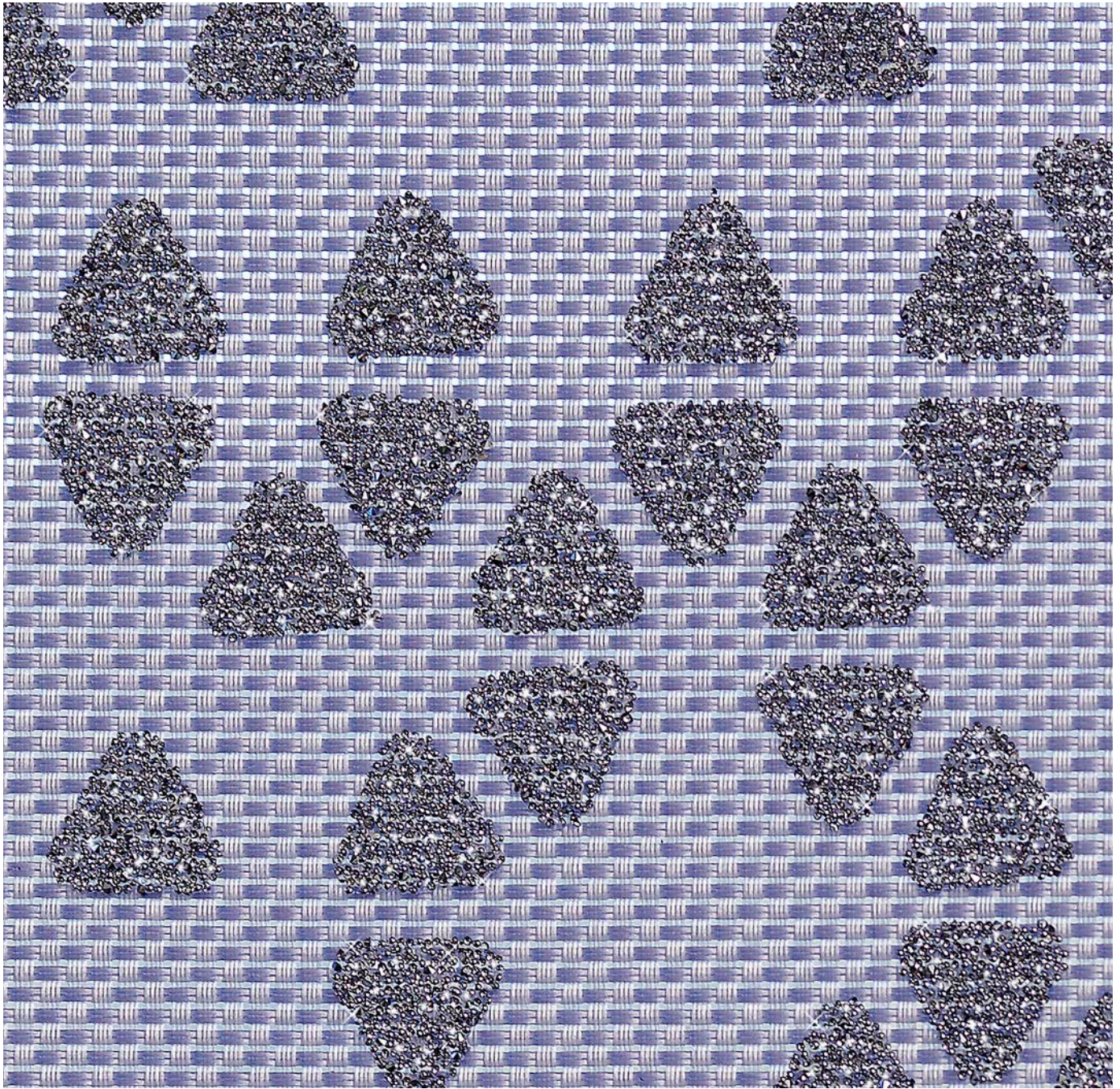
Edelweiss: i dettagli di qualità
fanno la differenza.

Creazioni che racchiudono i materiali più pregiati e il savoir-faire di Destiny. Un vero e proprio tributo alla nostra passione per il tessile, un connubio di storia e innovazione.

Un universo colmo di fascino e dettagli unici, capace di creare un'atmosfera di delicata lucentezza e stile atemporale.

AquaClean Technology e Trevira sono i progressi tecnici della collezione. Questa eccezionale combinazione è perfetta per sofisticati progetti di contract ed è assolutamente consigliata per uso residenziale.

In poche parole, Edelweiss è il nuovo capitolo della nostra storia di creazione.



Boreal 4 Concept



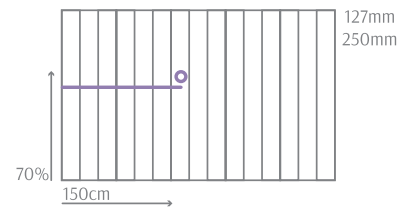
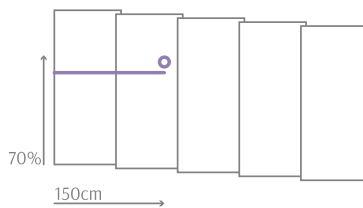
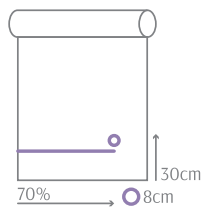
Clear Metal ECO 4
Ondano 2

aqua
clean
TECHNOLOGY

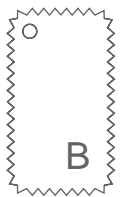
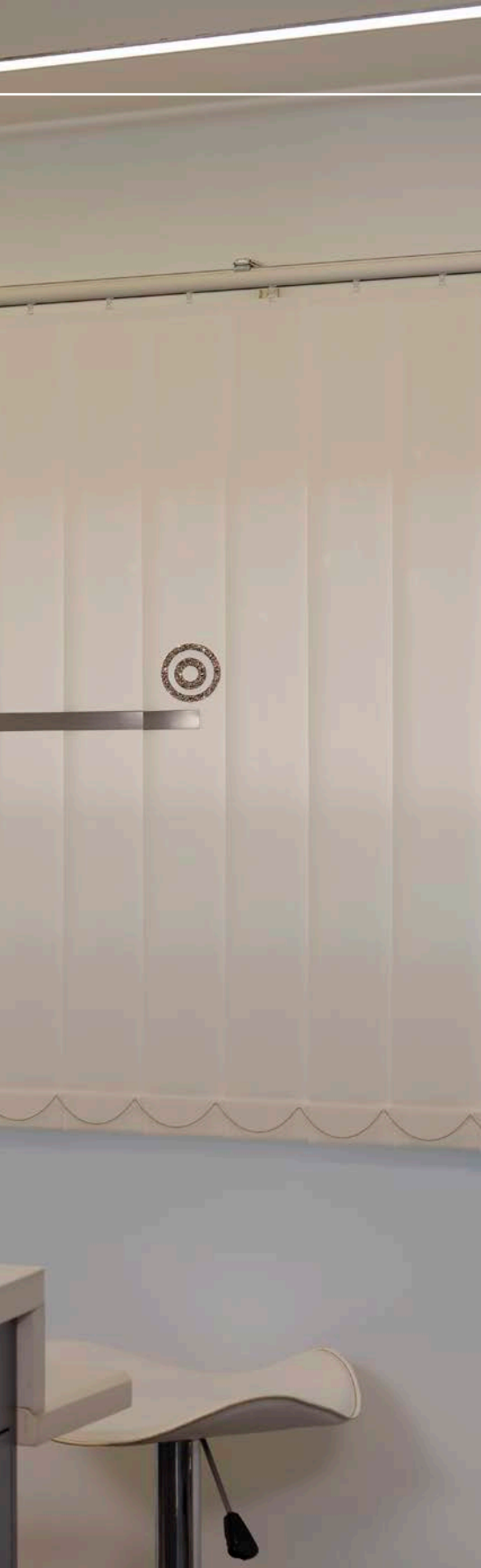




P80MSWA4 (C06545)
VM022U (C05209)

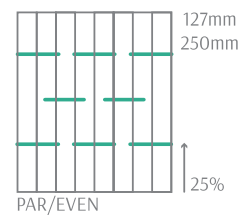
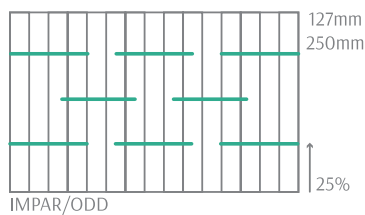
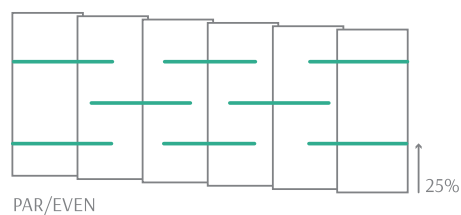
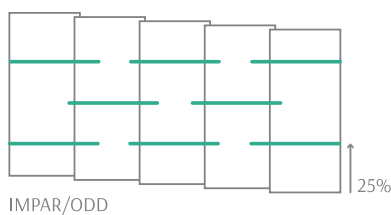
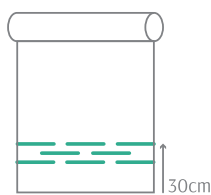
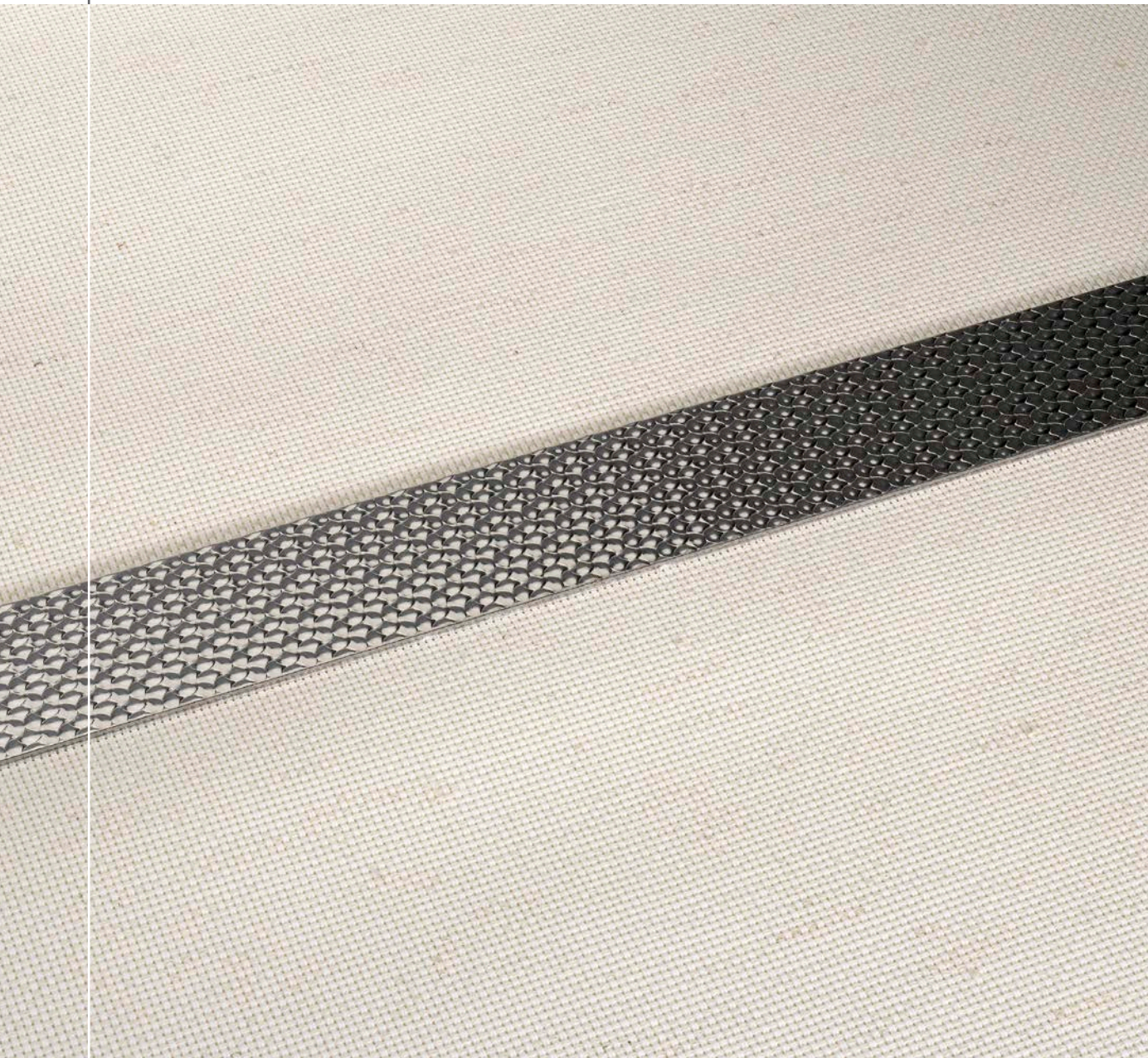


Boreal 5 Concept



CST 01-1127-1

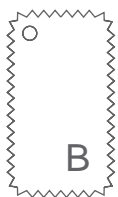




Da Vinci
stainless steel

C06233

Da Vinci 4 Concept



Safari ECO 1

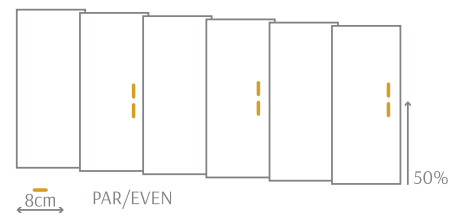
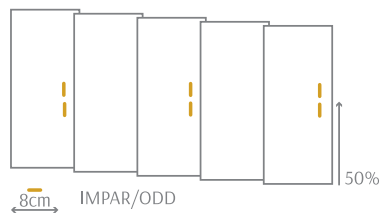
→ 4% Lino natural
 → 4% Natural linen
 → 4% Lin naturel
 → 4% Lino naturale



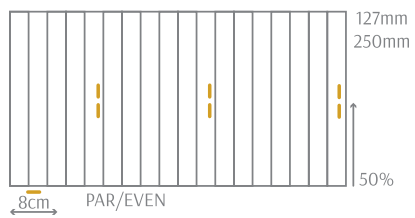
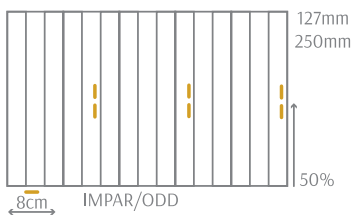
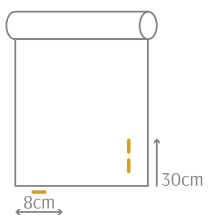
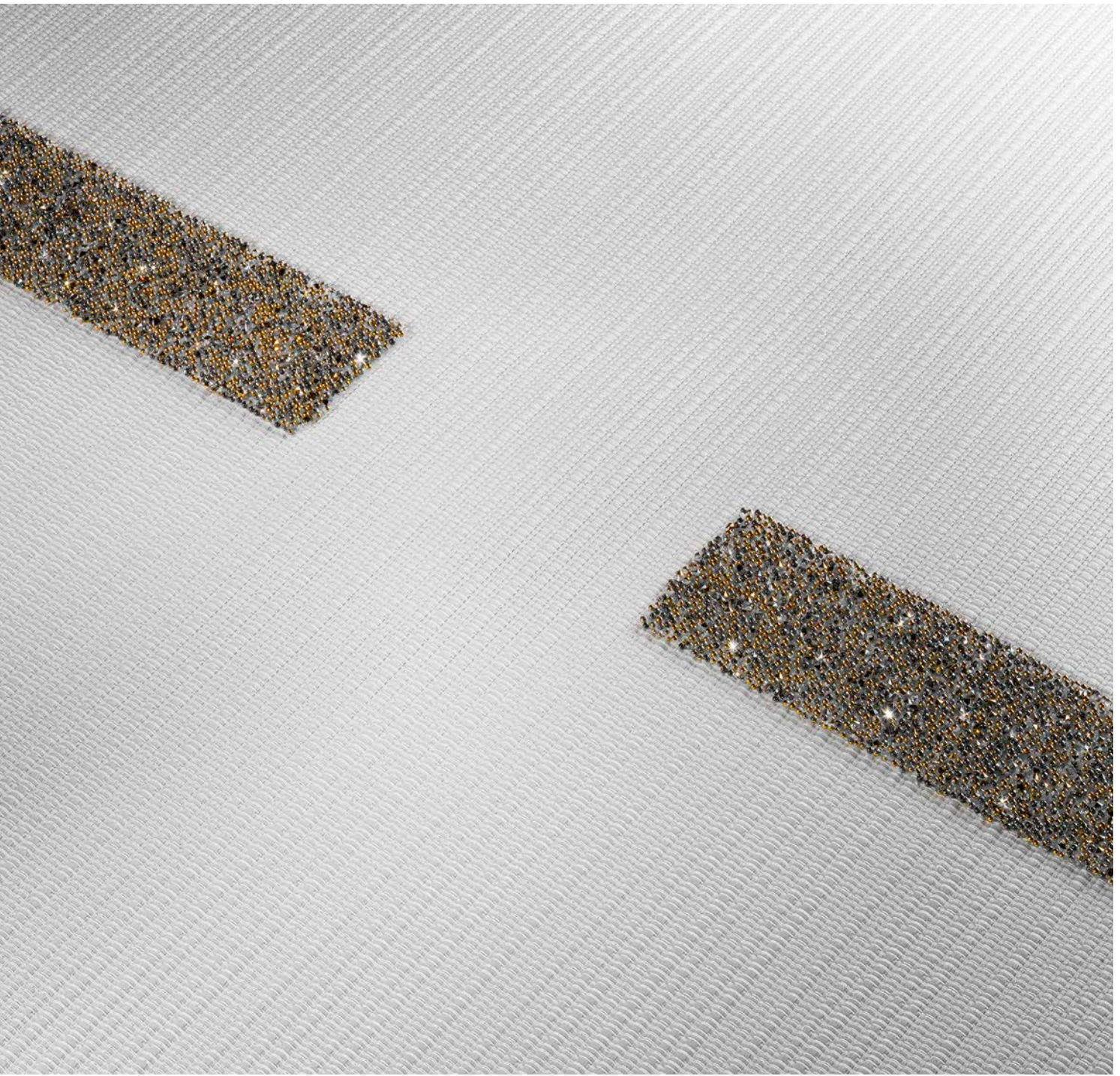
aqua
 clean®
 TECHNOLOGY



C20SWA2 (C06530)

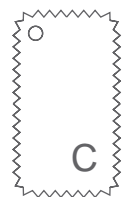


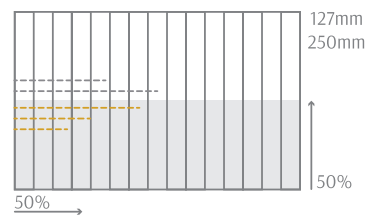
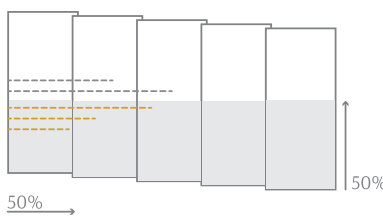
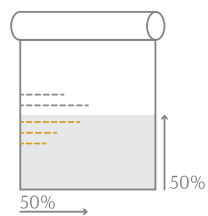
Moonlight 1 Concept



aqua
clean®
TECHNOLOGY

Edel 12





VM018U (C05242)
VB001U (C05076)

Moonlight 2 Concept



Neue SC 1
Clear Metal ECO 3

aqua
clean®
TECHNOLOGY



NEGATIVE ION



ANTI-BACTERIAL



ANTI-DUST MITE



ANTI-MOULD



DEODORISATION



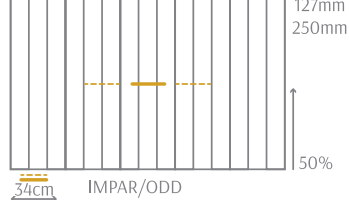
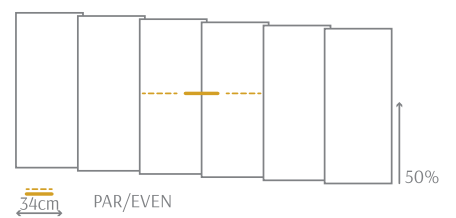
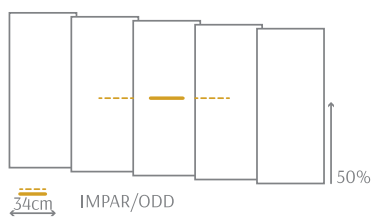
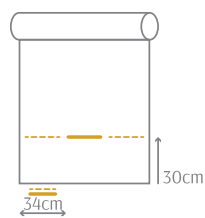
EM WAVE BLOCK



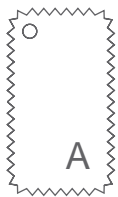
UV BLOCK



FLAME RETARDANT



Moonlight 6 Concept

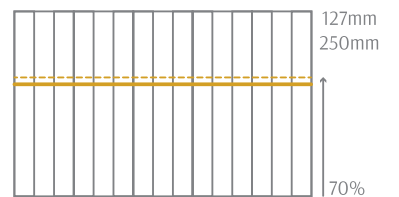
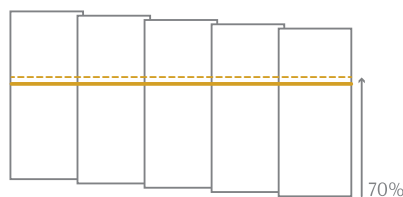
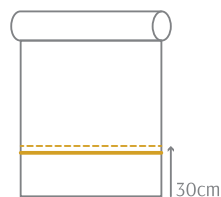


Pippen 2

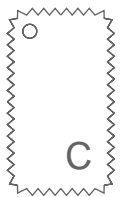
aqua
clean®
TECHNOLOGY



C10SWA3 (C06531)
VM015U (C05238)

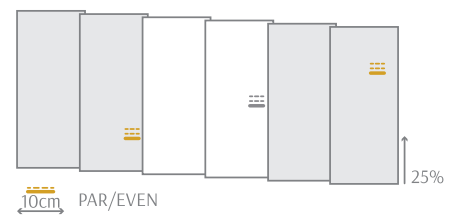
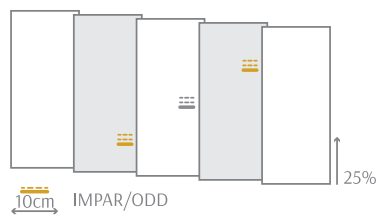
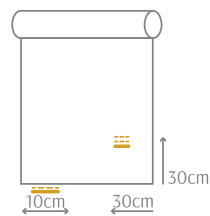
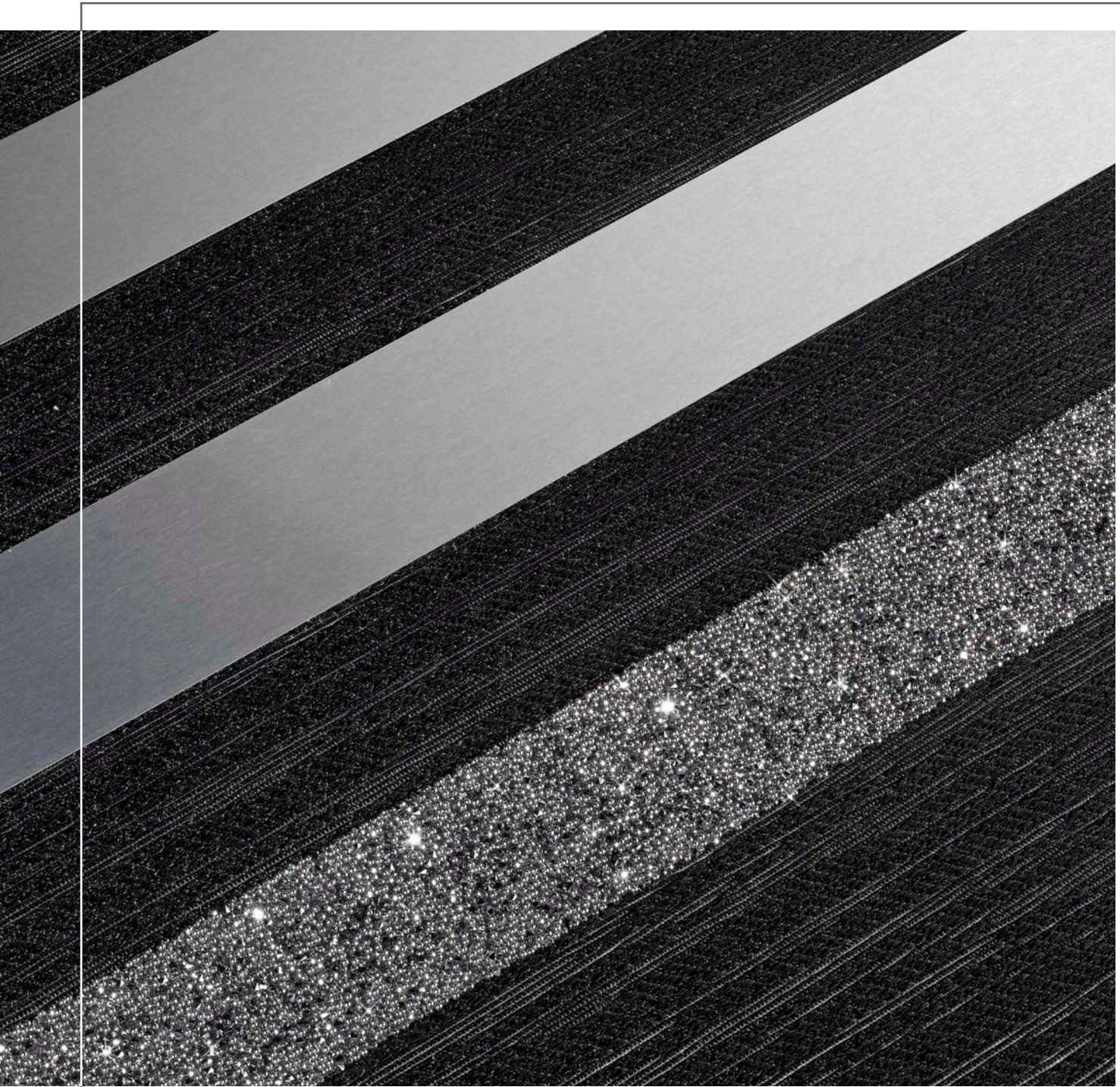


Moonlight 9 Concept

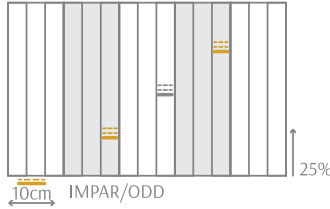


Mystery 6031

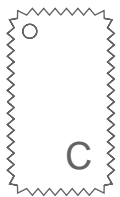
aqua
clean®
TECHNOLOGY



C20SWA1 (C06534) - VM016U (C05239)
C20SWA4 (C06536) - VB006U (C05223)

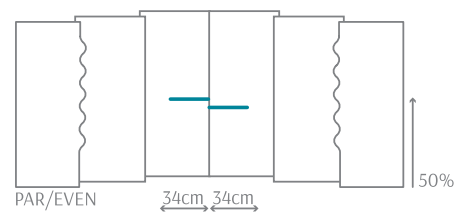
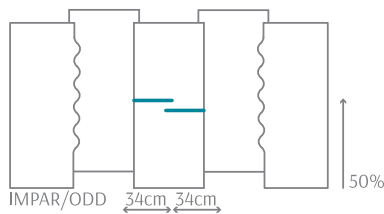


Moonlight 13 Concept

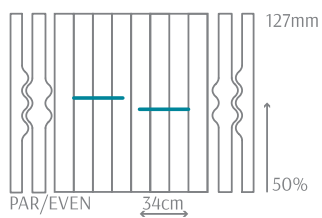
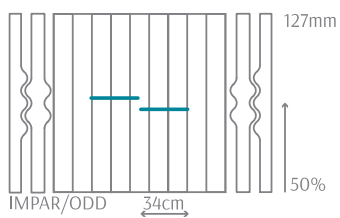
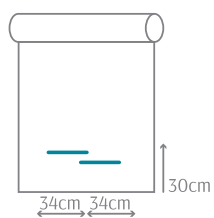


Leo 1
Leo 3

aqua
clean®
TECHNOLOGY



Supernova 2 Concept



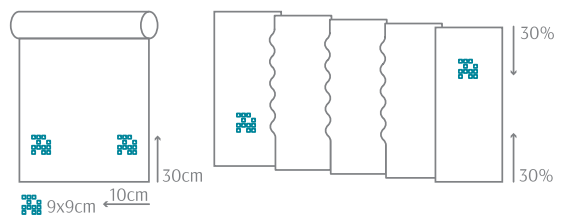
Odin ECO 2

aqua clean
TECHNOLOGY

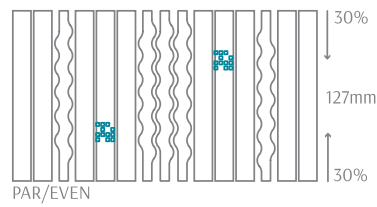
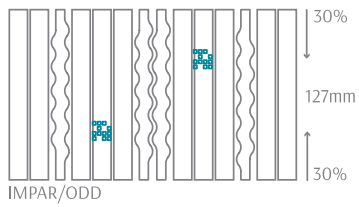
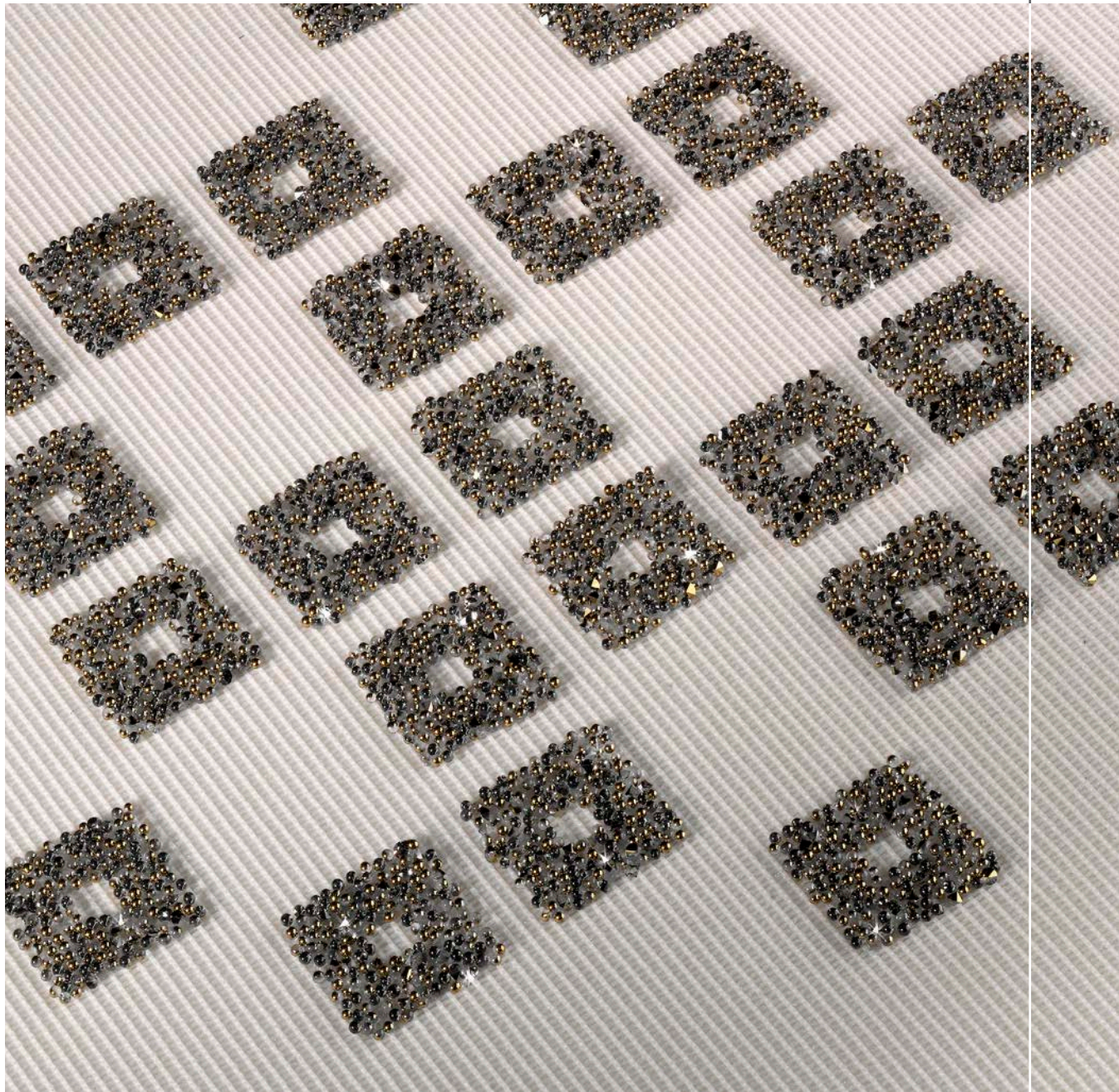
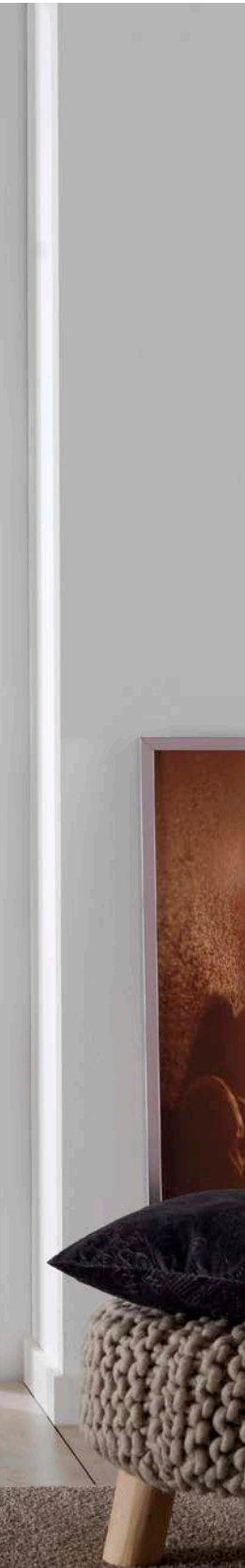




P90SWA3 (C06548)



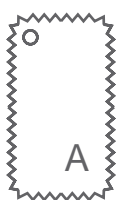
Supernova 3 Concept



aqua
clean®
TECHNOLOGY



Harper 2



	Kate	Pippen
Composición/Composition Composition/Composizione	100% PES	100% PES
Transmitancia/Transmittance Transmission/Trasmittanza	50%	40%
Peso/Weight Poids/Peso	195g/m ²	135g/m ²
Espesor/Thickness Épaisseur/Spessore	0,45	0,34
Resistencia a la luz/Light fastness Résistance a la lumière/Resistente alla luce	4	>5
Retardante al fuego/Fire resistant Traitement ignifuge/Ignifugo	-	-
Ancho/Width Laize/Larghezza	270cm	300cm
Factor de apertura/Openness factor Facteur d'ouverture/Fattore di apertura	0%	1%
Referencias/References Références/Referenze	1, 2, 3	1, 2, 3
Aplicaciones/Applications Applicazioni/Applicazione		
Mantenimiento/Maintenance Maintient/Manutenzione		

→ En la instalación del concepto Supernova, la profundidad debe ser apta para alojar las lamas con formas.

→ When installing Supernova concept, the depth has to be as for shaped slats.

→ Pour l'installation des lames Supernova, il faut tenir en compte la profondeur de l'espace ou les lames seront logées.

→ Per l'installazione delle lamelle Supernova, la profondità deve essere suiciente ad alloggiare le lamelle in base alla loro forma.



	Clear Metal ECO	CST 1-1125	CST 1-1127	CST 1-1154	Harper
Composición/Composition Composition/Composizione	75%PVC 25%PES	100% TREVIRA	100% TREVIRA	100% TREVIRA	100%PES
Transmitancia/Transmittance Transmission/Trasmittanza	32%	24,5%	24,5%	26%	47%
Peso/Weight Poids/Peso	430g/m ²	220g/m ²	220g/m ²	220g/m ²	162g/m ²
Espesor/Thickness Épaisseur/Spessore	0,59	0,27	0,26	0,25	0,40
Resistencia a la luz/Light fastness Résistance a la lumière/Resistente alla luce	5-6	>5	>5	>5	7-8
Retardante al fuego/Fire resistant Traitement ignifuge/Ignifugo					-
Ancho/Width Laize/Larghezza	250cm	280cm	280cm	280cm	300cm
Factor de apertura/Openness factor Facteur d'ouverture/Fattore di apertura	5%	5%	3%	3%	22%
Referencias/References Références/Referenze	1, 2, 3, 4	0, 1	0, 1	0, 1	1, 2, 3
Aplicaciones/Applications Applicazioni/Applicazione					
Mantenimiento/Maintenance Maintient/Manutenzione					



→ 4% Lino natural
 → 4% Natural linen
 → 4% Lin naturel
 → 4% Lino naturale



	Odin ECO	Safari ECO	Mink SC Neue SC Riviera SC	Ondano
Composición/Composition Composizione/Composizione	74%PVC 26%PES	66%PVC 30%PES - 4%LI	60%PES 40%CV	100%PES
Transmitancia/Transmittance Transmission/Trasmittanza	10%	8%	-	-
Peso/Weight Poids/Peso	500g/m ²	325g/m ²	107g/m ²	95g/m ²
Espesor/Thickness Épaisseur/Spessore	0,74	0,45	0,25	0,30
Resistencia a la luz/Light fastness Résistance a la lumière/Resistente alla luce	>6	>6	>5	>4
Retardante al fuego/Fire resistant Traitement ignifuge/Ignifugo			-	-
Ancho/Width Laize/Larghezza	300cm	250cm	275cm	280cm
Factor de apertura/Openess factor Facteur d'ouverture/Fattore di apertura	9%	5%	-	-
Referencias/References Références/Referenze	1, 2, 3	1	1	1, 2, 3, 4, 5, 6
Aplicaciones/Applications Applicazioni/Applicazione				
Mantenimiento/Maintenance Maintient/Manutenzione				



	Edel	Leo	Mystery
Composición/Composition Composizione/Composizione	100% PES	100% PES	100% PES
Transmitancia/Transmittance Transmission/Trasmittanza	37%	9%	9%
Peso/Weight Poids/Peso	196g/m ²	156g/m ²	262g/m ²
Espesor/Thickness Épaisseur/Spessore	0,42	0,46	0,66
Resistencia a la luz/Light fastness Résistance a la lumière/Resistente alla luce	>7	>5	>5
Retardante al fuego/Fire resistant Traitement ignifuge/Ignifugo	-	-	-
Ancho/Width Laize/Larghezza	280cm	280cm	280cm
Factor de apertura/Openess factor Facteur d'ouverture/Fattore di apertura	5%	3%	1%
Referencias/References Références/Referenze	1, 12, 14, 17	1, 2, 3	6011, 6031 6043, 6084
Aplicaciones/Applications Applicazioni/Applicazione			
Mantenimiento/Maintenance Maintient/Manutenzione			



1. Retirar el exceso de residuo.
 2. Aplicar agua sobre la mancha, bien de forma directa o bien con un paño absorbente mojado y escurrido. Espere unos segundos.
 3. Presione sobre la mancha con el paño y frote suavemente sobre el tejido con movimientos circulares. Repetir el proceso las veces que sea necesario.
1. Remove any excess residue.
 2. Apply water over the stain, either directly or using a damp cloth. Wait a few seconds.
 3. Press down over the stain with a damp cloth and rub gently over the fabric in circular movements. Repeat if necessary.
1. Enlevez l'excès de saleté.
 2. Appliquez de l'eau sur la tache, soit directement, soit à l'aide d'un chiffon absorbant mouillé et essoré. Attendez quelques secondes.
 3. Tamponnez la tache avec le chiffon et frottez doucement le tissu en mouvement circulaire. Répétez l'opération autant de fois que nécessaire.
1. Eliminare l'eccesso di residuo.
 2. Applicare acqua sulla macchia, sia direttamente sia con un panno assorbente inumidito e strizzato. Attendere qualche secondo.
 3. Fare pressione sulla macchia con il panno e sfregare delicatamente il tessuto con movimenti circolari. Ripetere il processo il numero di volte necessario.



El sello de Swarovski incluye las últimas características de seguridad. Aparte de su efecto holograma, cada etiqueta y pegatina tiene un código único de 16 dígitos que se encuentra en la parte frontal de la etiqueta o pegatina directamente debajo del sello. Verifique la autenticidad de su sello: SWAROVSKI.COM/CRYSTALS

The Swarovski Seal comprises the latest security features. Apart from its hologram effect, every seal tag and sticker has a unique 16 digit code that can be found on the front of the tag or sticker directly below the seal. Verify the authenticity of your code: SWAROVSKI.COM/CRYSTALS

Le Sceau Swarovski se compose des dernières fonctionnalités en termes de sécurité. En plus de son hologramme, chaque étiquette et autocollant portant le Sceau dispose d'un code alphanumérique de 16 caractères que vous pouvez retrouver sous le Sceau. Vérifiez l'authenticité de votre code: SWAROVSKI.COM/CRYSTALS

Il sigillo di garanzia Swarovski si avvale di alcuni dei migliori requisiti di protezione. Oltre all'hologramma, ciascun cartellino/adesivo recante il sigillo di garanzia riporta sulla parte frontale un codice identificativo unico di 16 cifre. Verifica l'autenticità del tuo codice: SWAROVSKI.COM/CRYSTALS

TECHNO-SCREEN



- Iones negativos, ayudan a refrescar y purificar el aire.
- Negative ions that help freshen and purify the air.
- Ions négatifs, qui aident a rafraichir et purifier l'air.
- Ioni negativi, aiutano a rinfrescare e purificare l'aria.



- Retardante al fuego.
- Fire-retardant.
- Traitement ignifuge.
- Ritardante di Zamma.



- Acabado anti bacteriano en el tejido.
- Antibacterial finish on fabric.
- Finissage anti bactéries sur le tissu.
- Finitura antibatterica nel materiale tessile.



- Ayuda a eliminar los olores molestos.
- It helps remove unpleasant odors.
- Aide à éliminer les odeurs indésirables.
- Si intende eliminare gli odori fastidiosi.



- Bloqueo de rayos UV. Previene daños producidos por los rayos UV.
- UV blockage. It prevents damage caused by UV rays.
- Blocage des rayons UV. Préviend les maux causés par les rayons UV.
- Blocco dei raggi UV. Previene danni causati dai raggi UV.



- Anti moho.
- Anti-mould.
- Anti moisissure.
- Anti mu, a.



- Anti ácaros, reducen las alergias causadas por los Ácaros domésticos.
- Anti-mite, to reduce allergies caused by domestic mites.
- Anti-acariens, réduisent les allergies causées par les acariens domestiques.
- Anti acari, riducono le allergie causate dagli acari domestici.



- Bloqueo de ondas electromagnéticas (ayuda a reducir la electricidad estática) lo cual reduce dolores de cabeza, cansancio, problemas para dormir, etc.
- Blocking of electromagnetic waves (it helps reduce static electricity) which reduces headaches, fatigue, sleep problems, etc.
- Blocage des ondes électromagnétiques (aide à réduire l'électricité statique). Ceci aide a réduire les maux de tête, fatigue, problèmes pour dormir, etc.
- Blocco di onde elettromagnetiche (aiuta a ridurre l'elasticità statica), riducendo mal di testa, stanchezza, problemi di sonno, ecc.



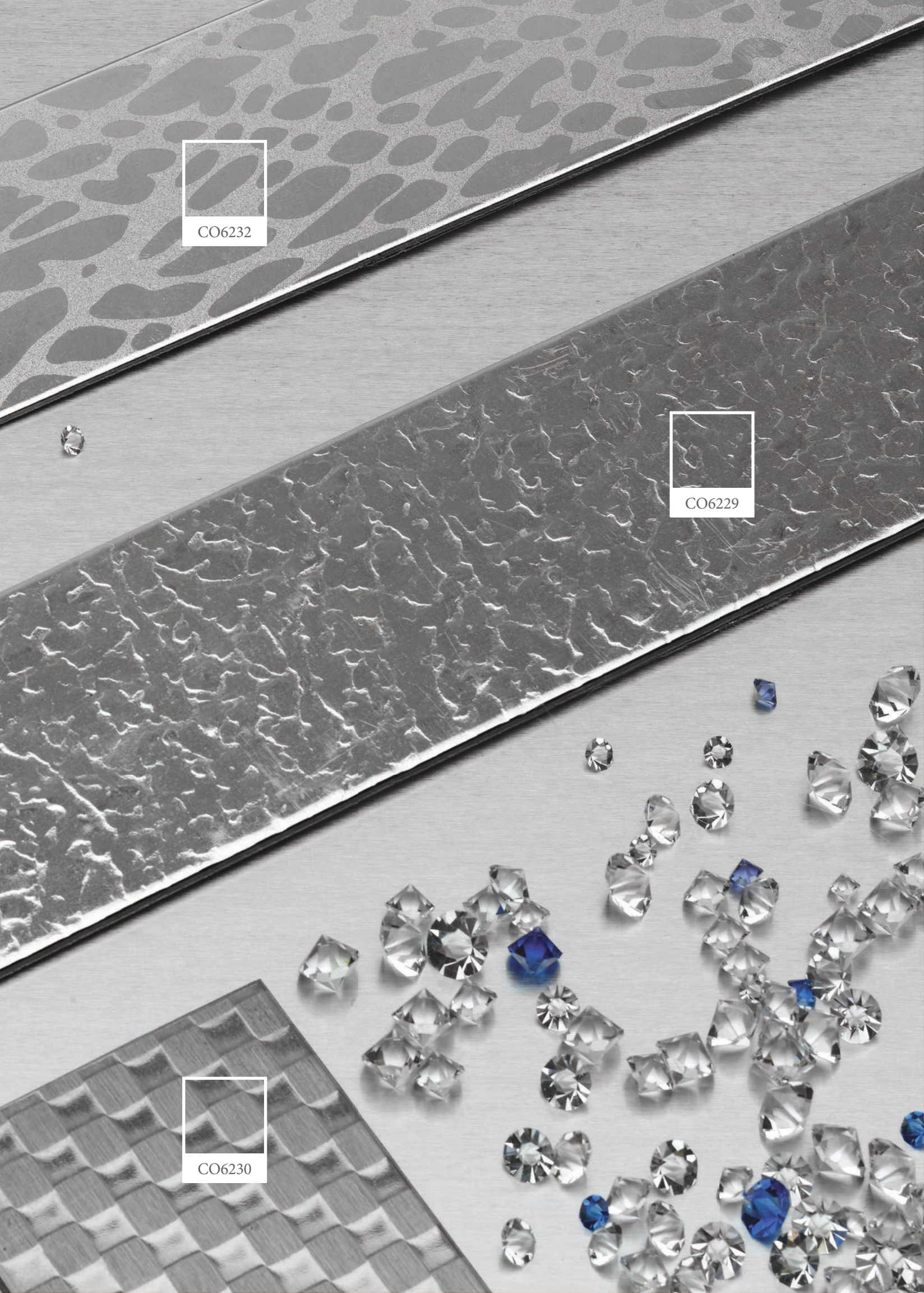
CO6232



CO6229



CO6230





destiny
www.destinyanddesign.com